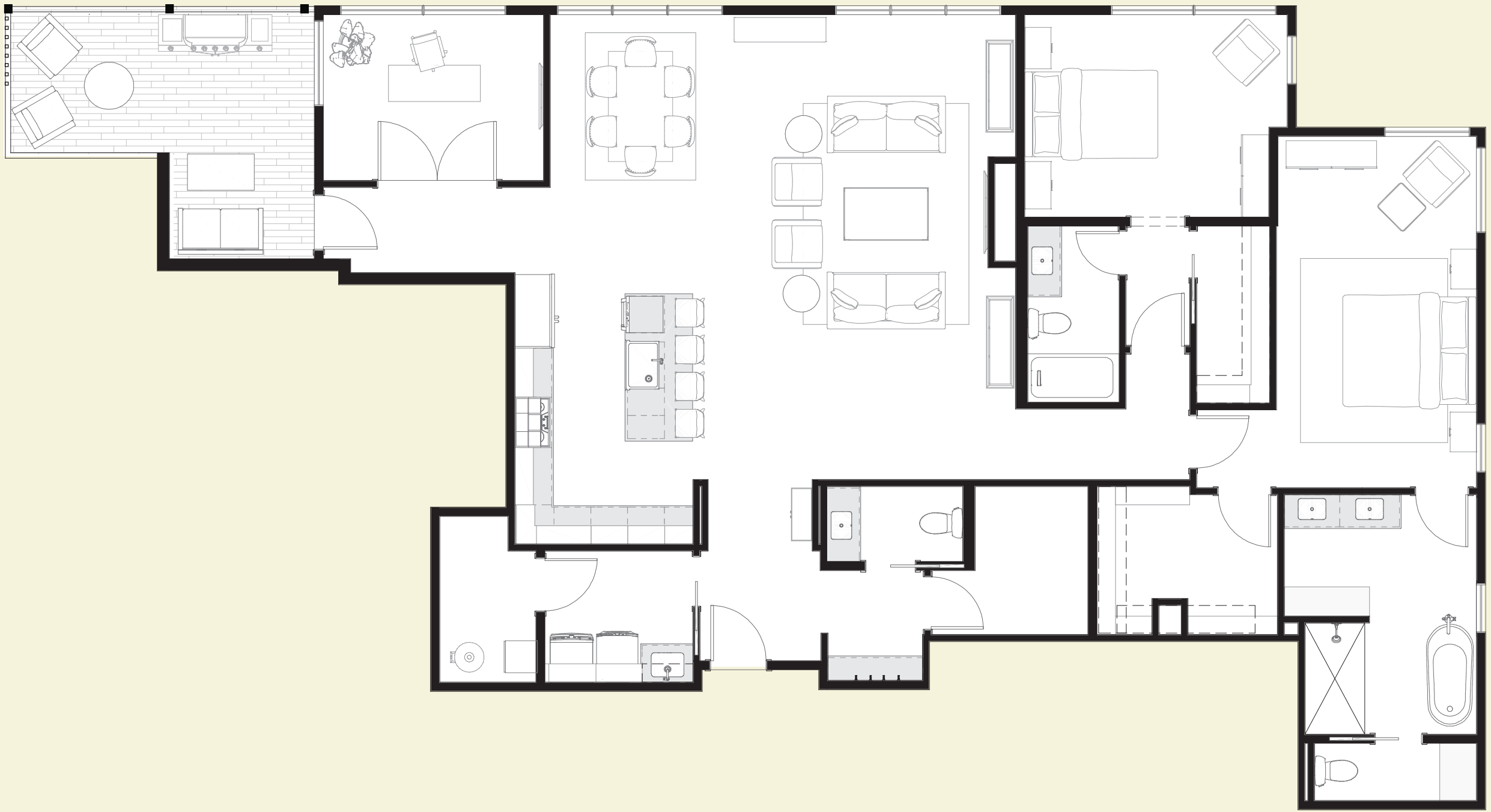
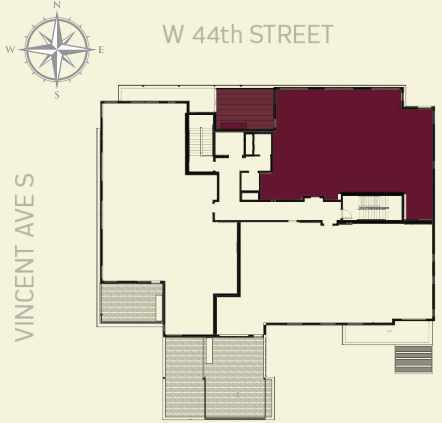


Residence 13



FOURTH FLOOR	
TWO BEDROOM + DEN	
THREE BATHROOM	
UNIT AREA	2000 SF
TERRACE AREA	165 SF
PARKING	2 ADJACENT STALLS

- » Daylight from the north and east
- » Oversized outdoor terrace with built-in outdoor kitchen
- » North-facing den or third bedroom
- » Electric fireplace options available
- » Oversized primary suite features sitting area, walk-in closet, and en suite bathroom with feature tub and separate water closet
- » Includes dedicated storage room
- » Option to remove den walls for living area integration

The Fletcher

at LINDEN HILLS

For marketing purposes only. Floor plans are not to scale. Designs are subject to change.